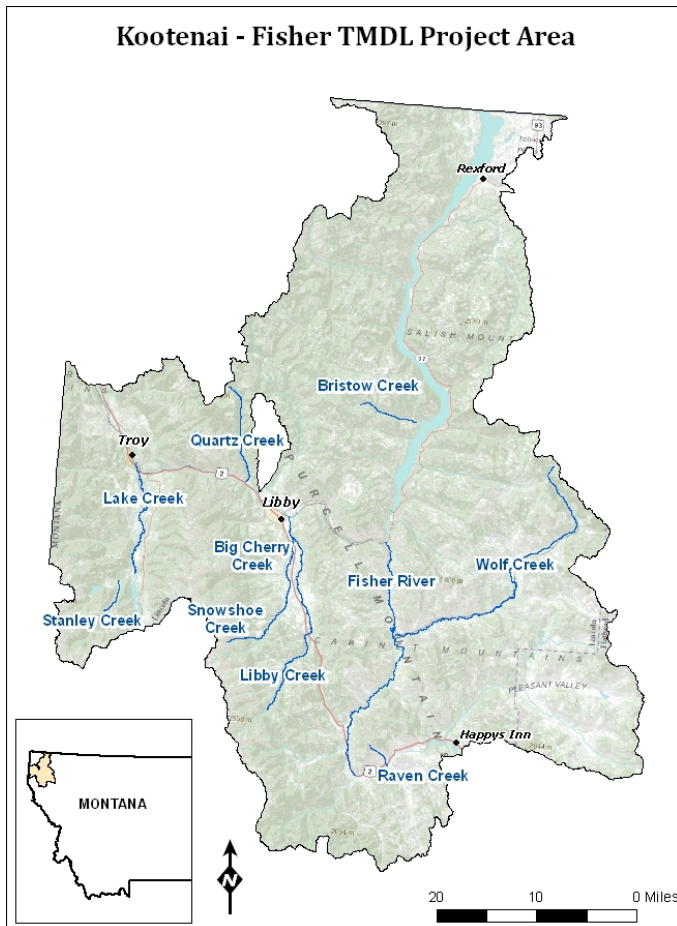


# Kootenai – Fisher Metals, Nutrients, Sediment, & Temperature TMDLs

April 4, 2012 Watershed Advisory Group Meeting



WATERSHED	STREAM	METALS IMPAIRMENTS	NUTRIENT IMPAIRMENTS	SEDIMENT IMPAIRMENTS	TEMPERATURE IMPAIRMENTS
Fisher River	Fisher River	X			
	Raven Creek		X	X	
	Wolf Creek			X	X
Kootenai River	Big Cherry Creek	X			
	Bristow Creek		X	X	
	Lake Creek	X	X	X	
	Libby Creek (just above Howard Creek to the Hwy 2 bridge)	X			
	Libby Creek (Hwy 2 bridge to mouth)			X	
	Quartz Creek			X	
	Snowshoe Creek	X			
	Stanley Creek	X	X		

**Project Timeline:**

Water quality sampling is being conducted by DEQ and EPA in 2012, and this project is anticipated to be complete by the end of 2013. A draft version of the TMDL document will be available for stakeholder review prior to the public comment period. Dates for stakeholder review, the public comment period, and public meeting will not be set until the project is nearing completion.

**Kootenai – Fisher TMDL Project Website:**

<http://montanatmdlflathead.pbworks.com>

Please visit this site for:

- Information about why we are doing this project
- Additional information on the streams included in the project and their water quality impairments
- Maps of the project location and included streams
- Maps of water quality sampling sites
- Project announcements and updates
- Copies of meeting presentations
- Summary and source assessment reports available for your review

**Project Contacts:**

Project Contact	Role	Email & Phone
Christina Staten	Project Coordinator	CStaten@mt.gov (406) 444-2836
Lou Volpe	Project Manager for the metals TMDLs	LVolpe@mt.gov (406) 444-6742
Lisa Kusnierz	Project Manager for the nutrients, sediment, and temperature TMDLs	Kusnierz.Lisa@epa.gov (406) 457-5001

**Water Quality Information for Streams in the Kootenai River and Fisher River Watersheds**

<http://www.cwaic.mt.gov/>

- Click on: Begin Search
- Then select “Kootenai” or “Fisher” in the TMDL Planning Area drop-down list under Step 2. The site will then provide you with a list of streams that have been monitored in the watershed you selected.
- Click on each stream’s “Summary Report” to see information on the stream’s water quality status, probable causes of impairment, and probable sources of impairment.

**DEQ TMDL Webpage:** <http://deq.mt.gov/wqinfo/TMDL/default.mcp>

***This project is not part of, or a result of, the superfund clean-up operations for the W.R. Grace vermiculite mine and asbestos contamination in Libby. This project is also not related to the permitting or development of an environmental impact statement for the Montanore Mine.***