



Whitefish River Impairment Resolution Options

JUNE 4TH, 2015

KALISPELL FWP OFFICE



PETER BRUMM

US EPA

Whitefish River Impairments

Temperature

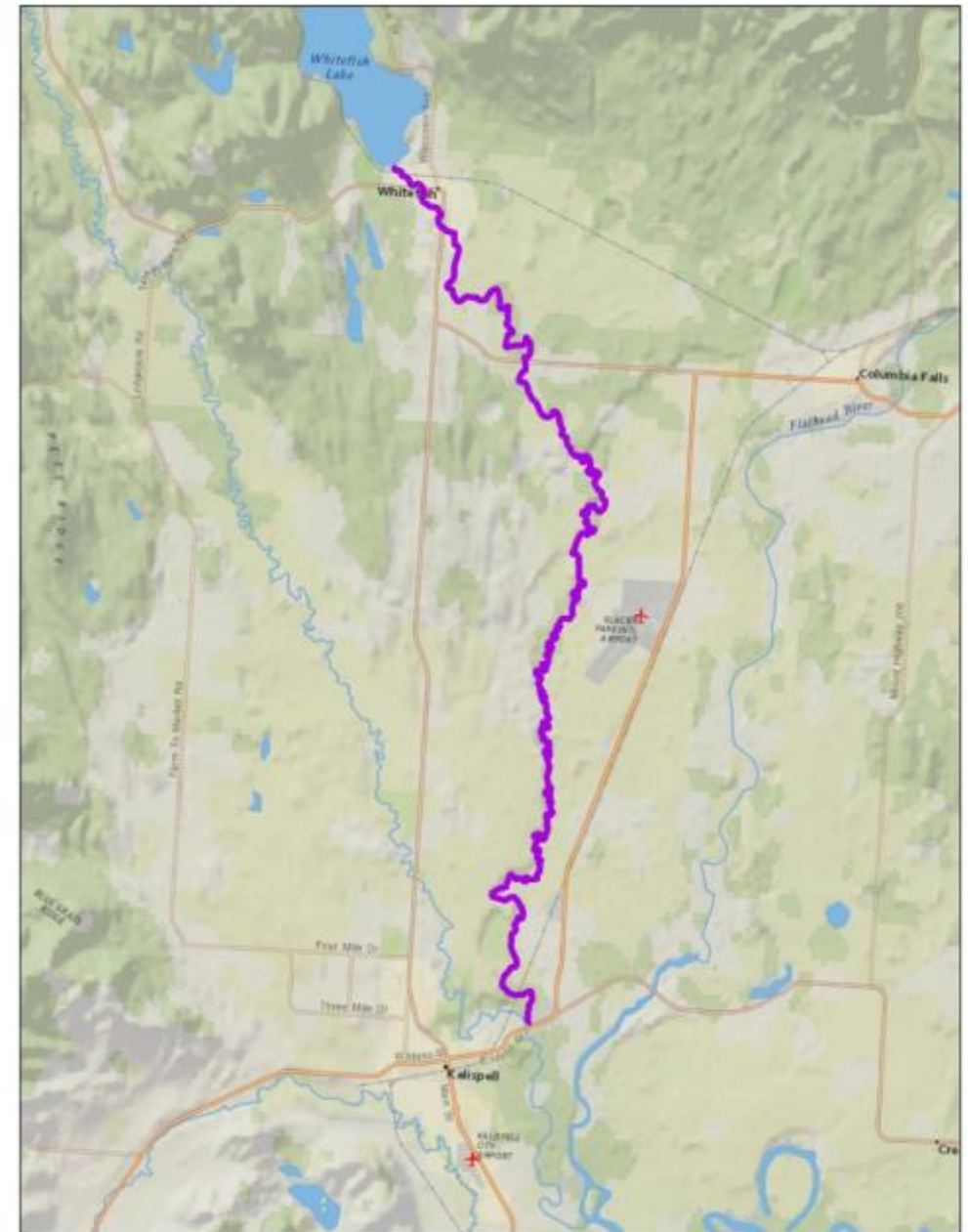
- Addressed by 2014 TMDL

PCB (Polychlorinated biphenyl)

- Unaddressed
- WQS Criteria:
 - Human Health = 0.00064 ug/L
 - Chronic Aquatic Life = 0.014 ug/L

Oil and Grease

- Unaddressed
- WQS Criteria:
 - ARM 17.30.622(2)(f) “No increases are allowed above naturally occurring concentrations of... oils...”
 - ARM 17.30.637 (1) “Waters must be free from...discharges that will: (b) create floating debris, scum, a visible oil film,...or globules of grease”



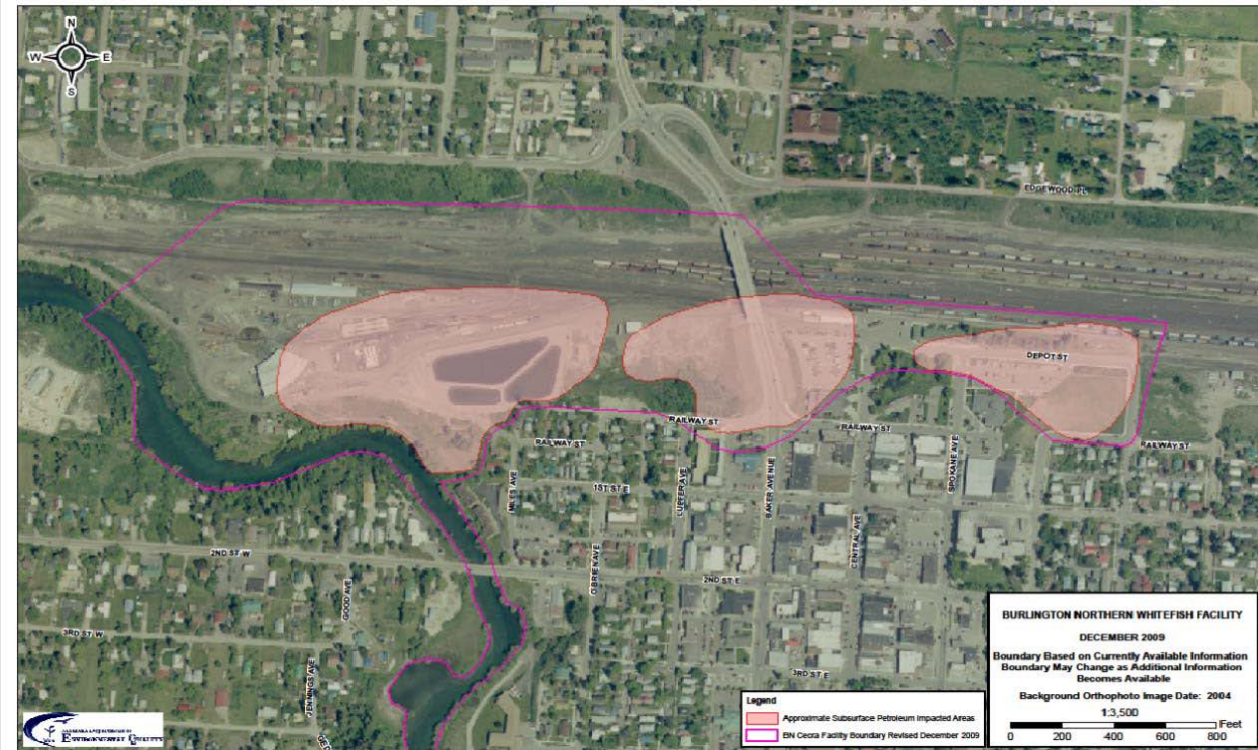
Brief History of BN Cleanup

Burlington Northern (BN) Whitefish Facility is a state superfund site.

Locomotive fueling and repair facility.

Soil, groundwater, and surface water contamination by petroleum products (primarily diesel)

- Polynuclear aromatic hydrocarbons (PAHs)
- Polychlorinated biphenyls (PCBs)
- Volatile organic compounds (VOCs)
- Heavy metals



(Figure from DEQ March 2015 Update Flier)

Simplified Timeline

1970s - Now

- BN and DEQ work together to investigate and recover contaminants in soils and groundwater at the rail yard facility

2007

- EPA investigates a complaint of oil observed in the Whitefish River and orders BN to remediate River

2009-2013

- BN dredges and excavates all contaminated River sediments

August 2014

- Final Human Health Risk Assessment for the River complete

May 2015

- BN and DEQ complete macroinvertebrate sampling in the River to assess ecological response

Now

- BN and DEQ have completed the Remedial Investigation Report and are working on the Human Health Risk Assessment for the rail yard site

Impairment Resolution Options

1.) Delist

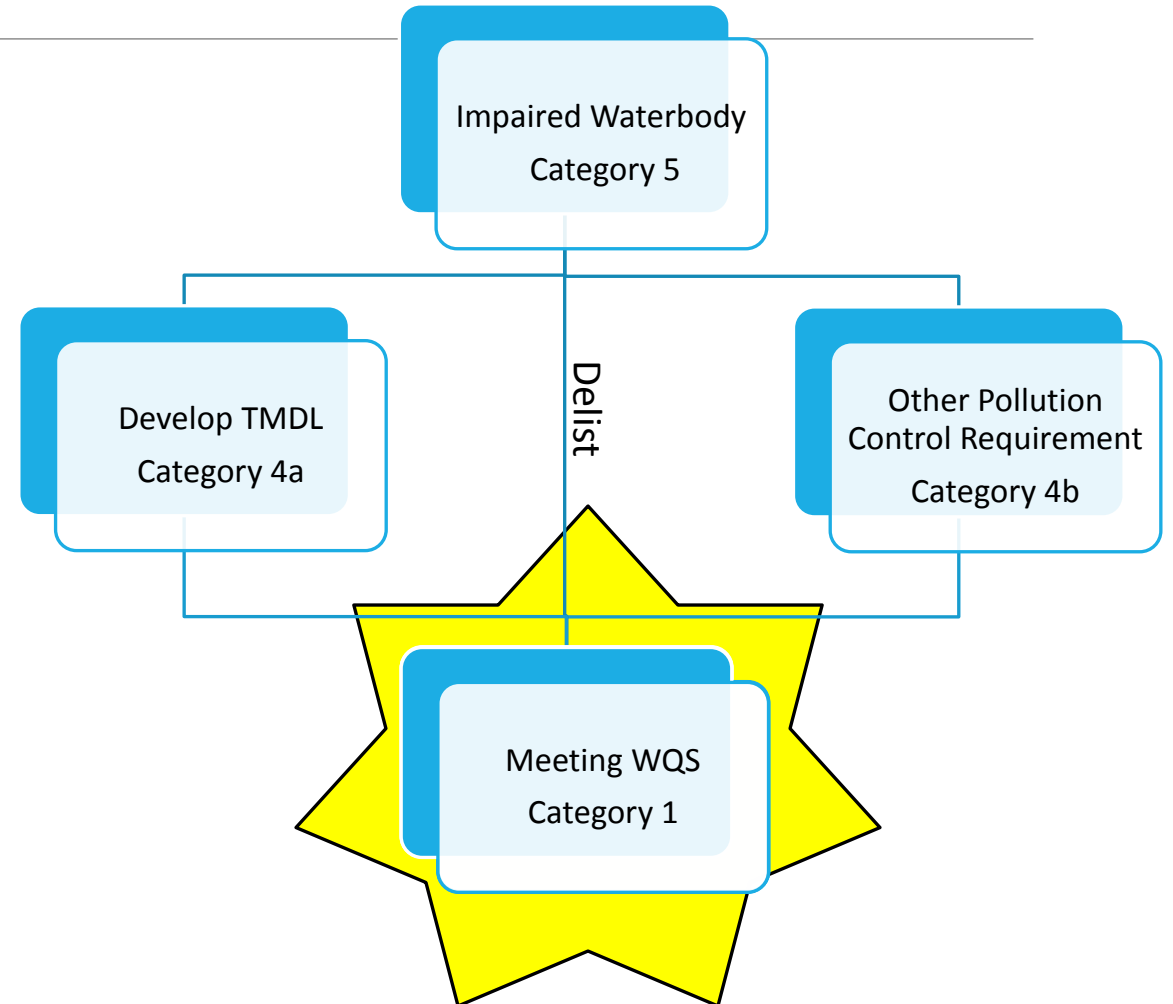
- Only if monitoring shows River currently meeting water quality standards

2.) Develop TMDL

- Oil & Grease TMDLs are rare (only 14 out of 70,000 nationally)
- PCB TMDLs also rare (500/70,000)

3.) Other Pollution Control Requirements

- Expected to attain all water quality standards within a reasonable period of time



Next Steps

Determine if Whitefish River is currently meeting all applicable water quality standards

- Review Superfund data and reports
- Review other sources of information
- Consider impairments separately
- Consider entire river segment and other beneficial uses
- Update the assessment

If not, we will need to develop a TMDL or consider the 4b approach.

Summary: We're looking into the issue, reviewing the data and cleanup activities, considering our options, and soliciting feedback

Questions?

Peter Brumm

Brumm.peter@epa.gov

406-457-5029